

# CANE CREEK 2008 WHEEL INSTRUCTIONS



## Introduction

**Unique Design:** Crono defines our proprietary technology (US Patent 5810453) of spoke nipples at the hub, spoke heads at the rim, and high-tension straight pull spokes. No weird, noodle like composite materials or dicey double-threaded spokes. The Crono design is different but very sensible. For more information on the benefits of Cane Creek Wheels with Crono Technology please visit our website, [www.canecreek.com](http://www.canecreek.com).

## Use

Cane Creek wheels are intended for single rider 2 wheel track, fixed-gear road, or single-speed road bicycles. All clincher models may be used with conventional rim brakes. The Sprint and Endurance 50 wheels require the use of special brake pads that are included with each wheelset. No brakes of any kind may be used on the Sprint and Endurance 85 wheels. Use on mountain bikes or other off-road applications is not recommended. Always observe safe cycling practices.

## Installation of Rim Strips (for clincher rims only)

It is necessary to install protective rim strips before mounting tires and tubes. All Cane Creek wheels come with rim strips pre-installed, however should they require replacement use a high quality rim strip that is wide enough to cover the spoke access holes completely. For adhesive backed rim strips, we recommend a minimum width of 15 mm for road wheels. For non-adhesive "Stretch-on" poly rim strips, widths of 17 mm are recommended. Rim strips *should not be used* on tubular wheels.

## Installation of Tubes and Tires

There are no special requirements for mounting tires on Cane Creek wheels. All clincher and tubular rims are drilled for Presta valves. As always with clinchers, don't use any sharp metal tools that can damage the tire, tube or rim. Check to be sure the tire and tube are properly seated before inflating to maximum pressure. For tubular wheels, please consult a professional bicycle shop for proper gluing and tire mounting procedures.

## Valve Extenders for Deep-Section/Carbon Rims

Before the tires are installed, unscrew the knurled Presta valve locknut all the way. The locknut remains unscrewed while the extender is in use. A layer of Teflon® plumbers tape on the valve threads will ensure a good seal. Screw the extender down finger-tight over the valve threads. To release air, push a small wire such as a paper clip into the extender to open the valve.

## Axle Nuts

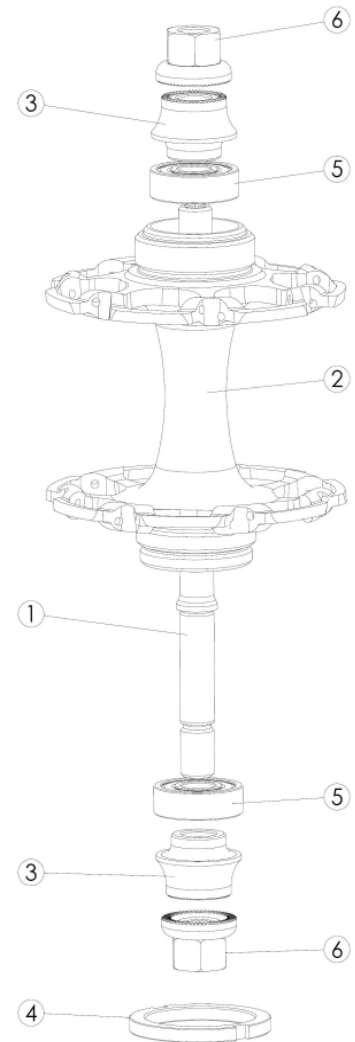
Cane Creek track hubs are supplied with front (M9x1) and rear (M10x1) axle nuts. Once the wheels are installed in the frame dropouts, use a 15mm wrench to tighten the nuts to 120 in-lbs (13.6 N\*m). A 5mm hex wrench can be inserted into the hex recess to keep the axle stationary while tightening the axle nuts. Always check that the axle nuts are firmly attached before every ride.

**CAUTION:** Never use nuts with an incorrect thread pitch to secure your wheel to the bicycle. Improper installation could result in a wheel system failure, causing severe injury or death.

## Track Cogs and Freewheels

Cane Creek track hubs are compatible with 1/8" and 3/32" cogs and freewheels with BC 1.37" X 24 tpi right-hand internal threads. Track cogs should only be installed on the "fixed" side of the hub. The fixed side may be identified by the presence of two distinct thread pitches and diameters. The smaller outer diameter is left-hand threaded for a lockring while the larger inner diameter is meant to interface with the track cog. Install the cog so that the shoulder on the cog mates with the shoulder on the hub shell. Cogs threaded to ISO or other thread standards may not be compatible with your Cane Creek track hubs. If you have any questions about track cog compatibility, please call Cane Creek Customer Service at 800.234.2725. The rear hub may also be equipped with a "free" side which may be identified by the presence of a single thread pitch and diameter which is longer than that of the fixed side. *Freewheels should only be installed on the "free" side and track cogs should only be installed on the "fixed" side with a properly tightened lockring.* Be aware that Cane Creek Track Wheels come in single-sided fixed, fixed-fixed, and fixed-free configurations. Never try to install a freewheel on the fixed side of the hub as this may damage the hub.

**CAUTION:** When installing or replacing a cog, be careful not to cross-thread the cog on the hub shell. The cog should thread on smoothly (by hand) until the shoulder on the cog body mates with the shoulder on the hub shell. Use a chain whip to tighten the track cog firmly against the hub shell.



- 1) Axle
- 2) Hub Shell
- 3) End Cap
- 4) Lockring
- 5) Bearing
- 6) Axle Nut

# CANE CREEK 2008 WHEEL INSTRUCTIONS



**WARNING:** NEVER install a track cog such that the sprocket teeth mate against the shoulder on the hub shell. Doing so may cause interference between the chain and hub flange – causing permanent damage and voiding the product warranty.

## Lockrings

Cane Creek track hubs are supplied with a CroMoly locking with BC 1.29" X 24 tpi left-hand internal threads for use on the fixed side(s) of the hub. NOTE THAT THE LOCKRING THREADS ARE LEFT-HANDED to prevent loosening caused by drivetrain resistance (back-pedaling pressure). A lockring should be installed at all times, fixed gear riding without a lockring will cause the cog to unthread resulting in the inability to apply braking pressure with the rear wheel. Lockrings with French or Italian thread standards are not compatible with your Cane Creek track hubs.

**CAUTION:** When installing or replacing a lockring, be careful not to cross-thread the lockring on the hub shell. The lockring should thread on smoothly (by hand) until it mates with the sprocket-side face of the track cog. Use a lockring spanner to tighten the lockring firmly against the cog.

**WARNING:** Always secure the track cog with a lockring. Both the cog and lockring should be fully tightened before riding your bicycle. Periodically check the tightness of the lockring.

## Wheel Truing

Cane Creek wheels are designed to stay straight, due to their unique configuration and high spoke tension. Should the wheels ever require truing, a 3/16" open end wrench is provided for turning the spoke nipples. The truing procedure is basically the same as for a conventional spoked wheel, except that the nipples are at the hub. The cog/freewheel may have to be removed to provide access to the spoke nipples on the rear hub. If significant truing or spoke replacement is required, it is necessary to maintain the target spoke tension (120kgf) as closely as possible. We recommend that any truing of Cane Creek wheels be performed by an experienced bicycle shop mechanic/wheel builder.

**WARNING** Never try to straighten a J-bend spoke as a substitute for a straight-pull spoke in a Cane Creek wheel.

## Spoke Information

Cane Creek wheels employ Sapim's Race, CX, or CX-ray spokes depending on the particular model. Replacement spokes and nipples are available from Cane Creek, or proper spokes can be cut to length at a suitably equipped bicycle shop. Never use a J-bend spoke in a Cane Creek wheel. Never try to straighten a J-bend spoke as a substitute for a straight pull spoke. We recommend that you have spokes replaced at your local bicycle shop. Refer to the Spoke Length Guide (below) if replacement is necessary.

## Safety and Maintenance

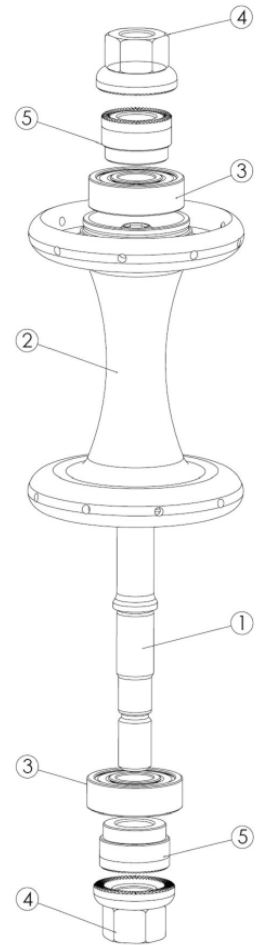
Although a Cane Creek wheel is engineered for strength and durability, it is in fact a high performance lightweight bicycle component and not designed to withstand constant abuse. A little care and attention will extend the life of your wheels and your safety. Periodically inspect the rims for dings, cracks or excessive wear. Inspect the hub shells for cracks near the spoke holes, or on the flanges. If any cracks are present, do not ride the wheels. Take them to a bicycle shop for service. Be sure all of the spoke nipples are secure. Check your quick release for proper function. Check the performance of the axle bearings. Clean the wheels with water and a household, automotive or bicycle detergent. Do not use solvents or abrasives for cleaning.

## Bearing Replacement

While the sealed cartridge bearings used in the Cane Creek track hubs are very durable, eventually they may need to be replaced due to wear or contamination. The bearings in the front and rear Cane Creek track hubs can be disassembled easily. Slide the end caps off the end of the axle by hand. Using a light hammer or press, tap one end of the axle until the far side bearing is clear of the housing. Before removing the axle, turn the hub around and carefully tap the remaining bearing out as well. Press a new bearing into one end of the hub using an old bearing as a drift (pressing on the outer race only). Reinsert the axle into the hub and press the remaining bearing into place by applying equal pressure to both the inner and outer race as it is pushed into position. Replace the end caps on the axle ends. Reinstall the spoke nipple covers (if applicable) and axle nuts. We recommend having the bearing replacement procedure carried out by a professional bicycle mechanic.

## WARRANTY

Cane Creek Cycling Components warrants its bicycle products for a period of 2 years from the original date of purchase. Any product that is found to be defective in materials or workmanship will be repaired or replaced at the discretion of Cane Creek. This warranty applies to the original owner only. This warranty does not cover damage or failure resulting from misuse, abuse, alteration, neglect, wear and tear, crash or impact, lack of maintenance or other conditions judged by Cane Creek to be abnormal, excessive, or improper. It is mandatory that a Return Authorization Number (RA#) be obtained by calling Cane Creek before any product is returned. Additionally, a dated Proof of Purchase must accompany the product when returned.



- 1) Axle
- 2) Hub Shell
- 3) Bearing
- 4) Axle Nut
- 5) End Cap

# CANE CREEK 2008 WHEEL INSTRUCTIONS



## 2008 Track Wheel Spoke Lengths

<u>Front Wheels</u>	<u>Spoke Length (Volos / Track V/ V33 / 50 / 85)</u>
18 spoke Radial	- / - / - / - / 232
24 spoke Radial	295 / - / 257 / -
24 spoke 2-Cross	- / 285 / 281 / 266 / 232
<u>Rear Wheels</u>	
24 spoke 2-Cross	288 / 277 / 281 / 259 / 225

## Spoke Tension

In the event of a spoke replacement all 2008 Cane Creek Track wheels should be tensioned to **120kgf** to ensure performance and reliability.

## Part Numbers

<u>Front Wheel Parts</u>			<u>Rear Wheel Parts</u>		
Axle - front		HF70101	Axle - rear	120mm	HR70103
Axle Nut - M9x1		HF70250	Axle Nut - M10x1		HR70250
Bearing		HFR70401	Bearing		HFR70401
End Cap - radial hubs	black	HFR70200K	End Cap - fixed/fixed or fixed/free	black	HR70204K
	silver	HFR70200S		silver	HR70204S
	red	HFR70200R		red	HR70204R
	blue	HFR70200B		blue	HR70204B
End Cap - 2 cross hubs	black	HFR70251K	End Cap - single sided drive	black	HR70204K
	silver	HFR70252S		silver	HR70204S
	red	HFR70253R			
	blue	HFR70254B	End Cap - single sided non-drive	black	HR70205K
				silver	HR70205S
Hub Shell - 18 spoke Radial	black	HF70506-01K	Hub Shell - single sided	black	HR0162K
	silver	HF70506-01S		silver	HR0162S
	red	HF70506-01B			
	blue	HF70506-01R	Hub Shell - fixed/fixed	black	HR0162-01K
Hub Shell - 24 spoke Radial	black	HF70506-02K		silver	HR0162-01S
	silver	HF70506-02S		red	HR0162-01R
				blue	HR0162-01B
Hub Shell - 24 spoke 2 Cross	black	HF0164-01K	Hub Shell - fixed/free	black	HF0162-02K
	silver	HF0164-01S		silver	HF0162-02S
	red	HF0164-01B		red	HF0162-02B
	blue	HF0164-01R		blue	HF0162-02R
Spoke Nipple Cover - 24 spoke radial	clear	HFR6027S	Lockring		HR70350
	black	HFR6027K			
	smoke	HFR6027			
Spoke Nipple Cover - 18 spoke radial	clear	HFR70201S			
	black	HFR70201K			
	smoke	HFR70201			